



# **Configuring Application Options**

# Appendix A - Configuring Application Options

This chapter will describe the configurable Application Options and how they can be configured.

## Configuring Application Options using the Application Options Dialog Box

The Application Options can be configured in the **Application Options** dialog box. To invoke the application dialog, choose **Tools > Options...** from main menu. The Application Options dialog consists of five pages: **General**, **Diagramming**, **Diagram/Model View**, **Instant Reverse** and **ORM**. Each page represents a category of options whose descriptions are described below.

### General

The **General** page of the Application Options dialog box contains general application options, such as auto save options, look and feel configuration and proxy server settings.

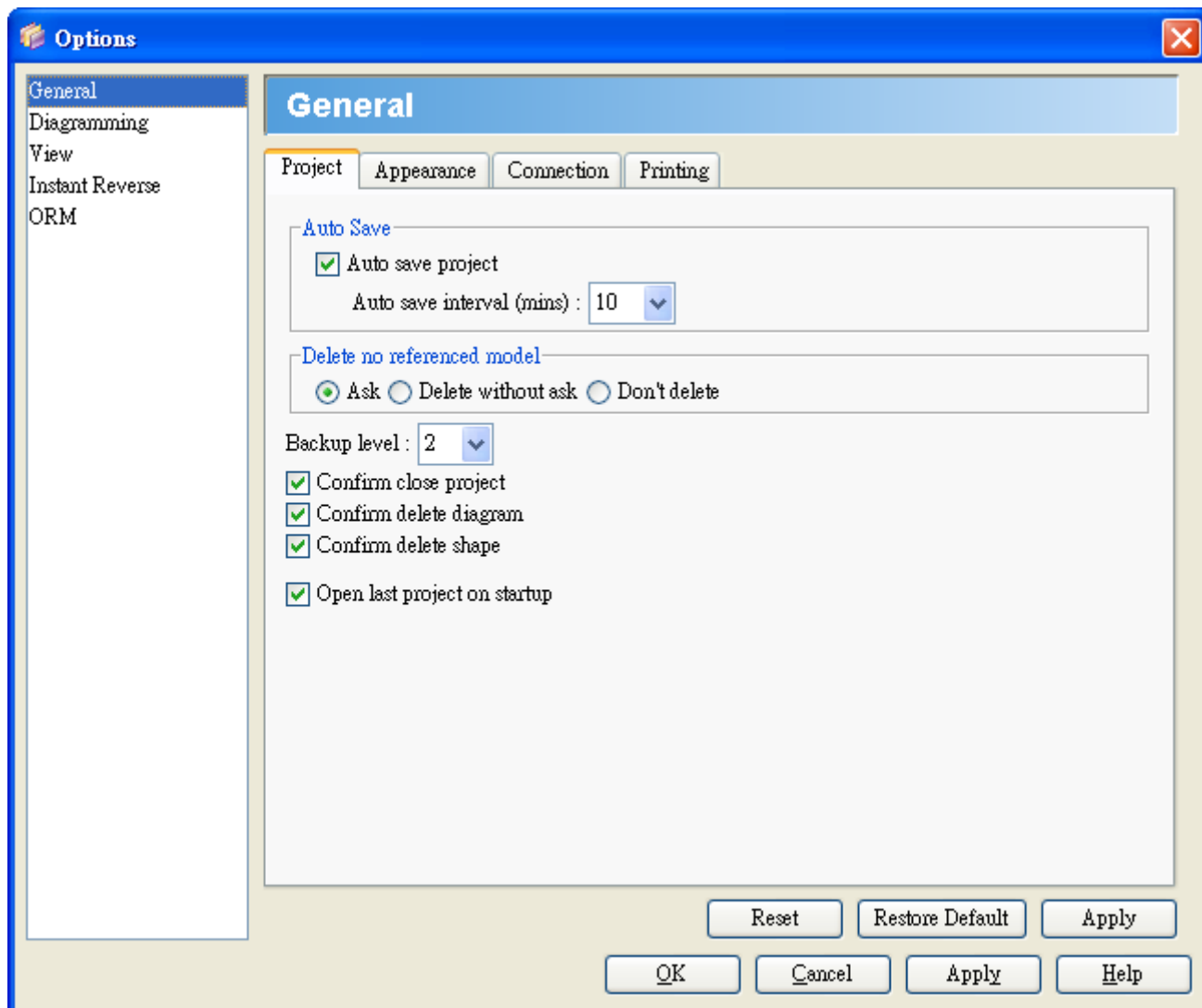


Figure A.1 - Application Option (General)

Option	Description
Project	
Auto save project	Check/Uncheck 'Auto save' project to enable/disable to auto-saving of project file.

Auto save interval (mins):	Click on the <b>Auto save interval (mins)</b> drop down menu and select a time interval for performing an auto-save at regular time interval.
Backup level	Set the number of backup copies of the project file to maintain.
Confirm close project	Select this option if you want a dialog asking for confirmation every time you try to close a project.
Confirm delete diagram	Select this option if you want a dialog asking for confirmation every time you try to delete a diagram.
Confirm delete shape	Select this option if you want a dialog asking for confirmation every time you try to delete shapes.
Open last project on startup	Select if you want VP-UML to load the last opened project on startup.
Appearance	
Look and Feel	Click on the <b>Look and feel</b> drop down menu and select a look and feel for the program interface.
Theme	Click on the Theme drop down menu and select the theme for the selected Look and Feel. The theme setting is only available for "Office 2003 LookAndFeel" .
User Language	Click on the <b>User Language</b> drop down menu and select a language. This is used for changing the language of the VP-UML program interface.
Connection	
Email	Enter the <b>Email</b> field to specify your email address.
Use Proxy	Check/Uncheck <b>Use Proxy</b> to enable/disable the need of using a proxy server for connecting to the Internet.
Host	Enter the <b>Host</b> field to specify the host of the proxy server.
Port	Enter the <b>Port</b> field to specify the port of the proxy server.
Login name	Enter the <b>Login name</b> field to specify the user name of the proxy server (if the proxy server required the user to login).
Password	Enter the <b>Password</b> field to specify the password of the proxy server (if the proxy server required the user to login).
Printing	
Use gradient color when print diagram	Select to use gradient color in printing diagrams.

Table A.1

## Diagramming

The **Diagramming** page of the Application Options dialog box contains diagram-related options, such as grid settings and anti-aliasing options.

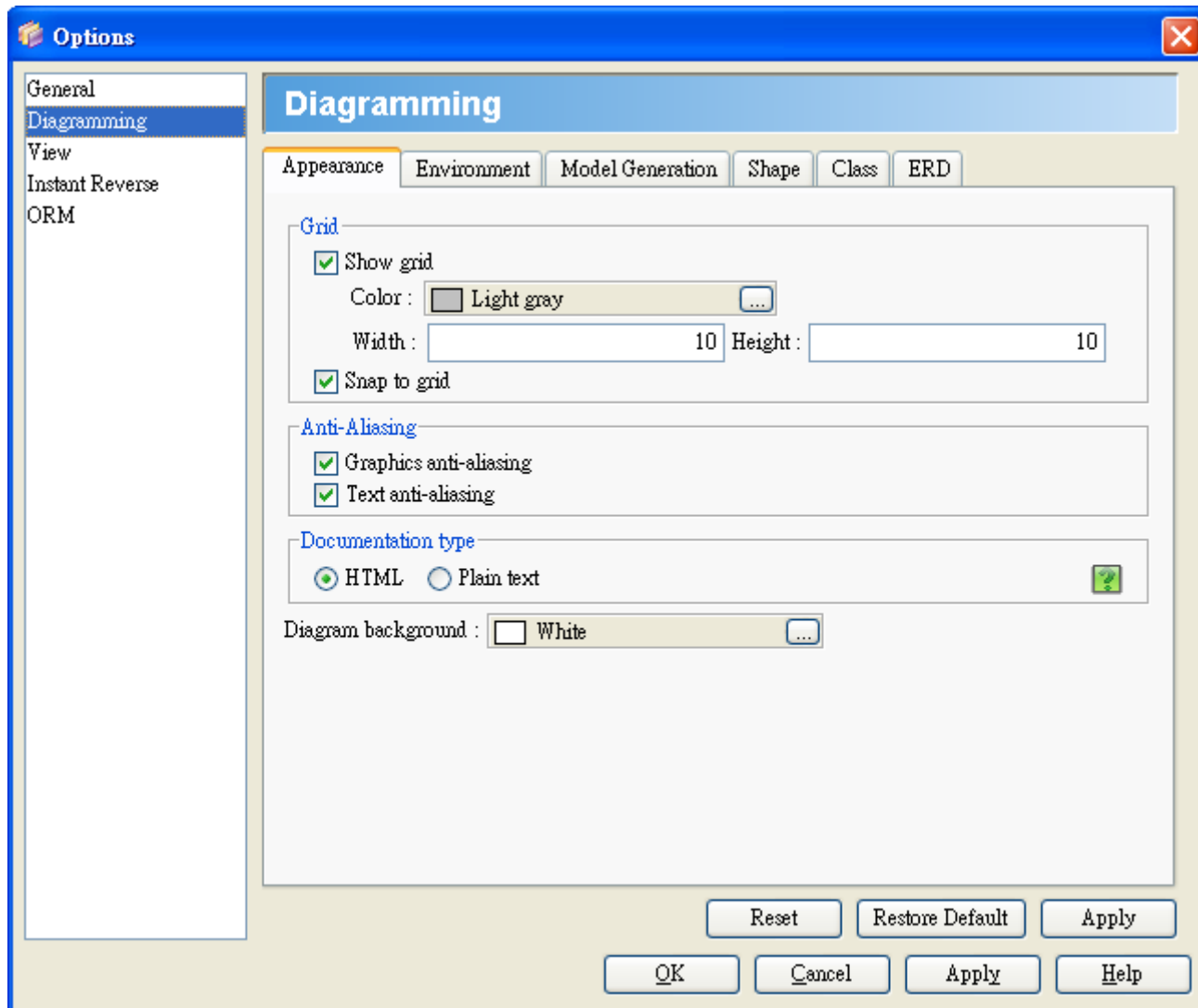


Figure A.2 - Application Option (Diagramming)

Option	Description
Appearance	
Show grid	Check/Uncheck <b>Show grid</b> to show/hide grid lines.
Color	Click on the <b>Color</b> field or the ...button beside it to adjust the grid color.
Width	Enter the <b>Width</b> field to specify the width of the grid.
Height	Enter the <b>Height</b> field to specify the height of the grid.
Snap to grid	Check/Uncheck <b>Snap to grid</b> to set whether diagram elements should/should not stick to grid lines when moving in the diagram
Graphics anti-aliasing	Check/Uncheck <b>Graphics anti-aliasing</b> to enable/disable smoothing of edges on graphics.
Text Anti-Aliasing	Check/Uncheck <b>Text anti-aliasing</b> to enable/disable smoothing of text.
Documentation type	Select to use either HTML (rich-text) or plain text format in documentation of models and diagrams.
Diagram background	Click on the <b>Diagram background</b> field or the ...button beside it to adjust the default background color of all diagrams.
Environment	

Connector Style	Select either <b>Rectilinear</b> or <b>Oblique</b> or <b>Curve</b> for connector style.
Connection Point Style	Select either ' <b>Round the shape</b> ' or ' <b>Follow center</b> ' to specify how the connecting points of the connectors should move if the shape is being moved.
Textual Analysis Highlight Option	Select either <b>Case insensitive</b> or <b>Case sensitive</b> to specify the highlight option in Textual Analysis. This determines whether words which are the same as the entered word or/and with same case are highlighted.
Clear opposite side content in flow of event	Select <b>Yes</b> to enable clearing of the opposite side content in flow of event, i.e. In a row within a flow of events, entering text on either <b>Actor Input</b> or <b>System Response</b> result sin removing the content of the opposite side). Click <b>No</b> to disable clearing of the opposite side content in flow of event. Click <b>Prompt</b> to enable prompting for clearing opposite side content every time you enter text on one side for which its opposite side has existing content.
Alignment Guide	Select the diagram alignment guide style to either <b>Show edges</b> (show guides at edges of the closest shape) or <b>Show center</b> (show a guide that lies on the center of the closest shape).
Delay of show Quick Preview in Diagram Navigator (second)	Enter the time (secs) needed for the Quick Preview for being displayed after the mouse is hovering on any diagram node in Diagram Navigator.
Default Copy Action	Select the default copy action (the action that will be performed when user presses hotkey Ctrl+C in diagram).
Show sequence number in collaboration diagram.	Check/Uncheck to enable/disable showing sequence numbers for messages display in the collaboration diagram.
Show sequence number in sequence diagram.	Check/Uncheck to enable/disable showing sequence numbers for messages displayed in the sequence diagram.
Show shape content when dragging	Check/Uncheck to enable/disable showing the content of shapes and not just the outline.
Show diagram alignment guide	Check/Uncheck to enable/disable showing the guide which helps aligning shapes on a diagram.
Show Message Operation Signature for Sequence Diagram and Communication Diagram (diagram-based)	Select to show operation signature of messages in Sequence Diagrams and Communication Diagrams.
<b>Model Generation</b>	
Generate Sequence Diagram from Use Case Description Overwrite Existing Diagram	Select to allow overwrite of sequence diagrams generated from use case description without prompt.
Generate Diagram from Scenario Overwrite Existing Diagram	Select to allow overwrite of diagrams generated from scenarios (activity diagrams) without prompt.
Overwrite Flow of Events when Synchronize from Sequence Diagram	Select to allow overwrite of flow of events of use case description is synchronized from sequence diagram without prompt.
Default generate diagram type from scenario	Select the default type of diagram to be generated from scenario (activity diagram).
<b>Shape</b>	
Font	Enter the font family of shape text.
Size	Enter the font size of shape text.
Bold	Check/Uncheck to set the shape text to/not to be bold.
Italic	Check/Uncheck to set the shape text to/not to be italic.
Color	Click on the <b>Color</b> field or the ...button beside it to adjust the default font color of all shapes.
Show extra resources	Check/Uncheck to enable/disable extra resource icons in addition to those originally supported.
Auto hide resource delay (second)	Enter the time interval for hiding resources icons after they have lost focus.
Shape foreground	Click on the <b>Color</b> field or the ...button beside it to adjust the default color of all shapes.

Shape background	Click on the <b>Color</b> field or the ...button beside it to adjust the default background color of all shapes.
Auto fit size (diagram-based)	Select to keep shapes in diagram fit-to-size.
Pin from	Select to pin the "from" end of connector by default.
Pin to	Select to pin the "to" end of connector by default.
Class	
Use model assist	Check/Uncheck ' <b>Use model assist</b> ' to enable/disable the Model Assist feature that allows automatic class name completion.
Show package structure on model assist	Check/Uncheck to enable/disable displaying the package name of the list of available models when using the Model Assist feature.
Show attribute option	Set the default option for displaying attributes of classes to one of the following: Hide all: All attributes are hidden. Show all: All attributes are shown. Show public only: Only public attributes are shown.
Show operation option	Set the default option for displaying operations of classes to one of the following: Hide all: All operations are hidden. Show all: All operations are shown. Show public only: Only public operations are shown.
Visibility style	The default visibility style for Class. It can either be: Icon - Visibilities are represented by icons. UML - Visibilities are represented by UML visibility symbols, e.g. + for public, - for private. Off - Visibility is not shown.
Show attribute initial value	Check/Uncheck to enable/disable the display of initial value of attributes
Show attribute multiplicity	Check/Uncheck to enable/disable the display of multiplicity of attributes
Show operation signature	Check/Uncheck to enable/disable the display of operation signature of attributes
Show class member stereotype	Check/Uncheck to enable/disable the display of stereotype of class members (e.g. attributes and operations)
Show owner of class/package	Check/Uncheck to enable/disable the display of the owner of classes and packages (e.g. package)
Show template parameter	Check/Uncheck to enable/disable the display of template parameter of classes.
Display as Robustness Analysis icon	Check/Uncheck to enable/disable displaying classes as robustness analysis icon.
Display as stereotype icon	Check/uncheck to enable/disable displaying classes as stereotype icon (if any).
Auto-synchronize role name	Select to enable auto synchronization of role names of associations.
Auto-generate role name	Select to enable auto generation of role names when creating associations.
ERD	
Show column type	Select to show the data type of table columns in ERD and ORM diagram by default.

Table A.2

## View

The **View** page of the Application Options dialog box contains options related to the view of Diagram Navigator, Model Tree and Class Repository.

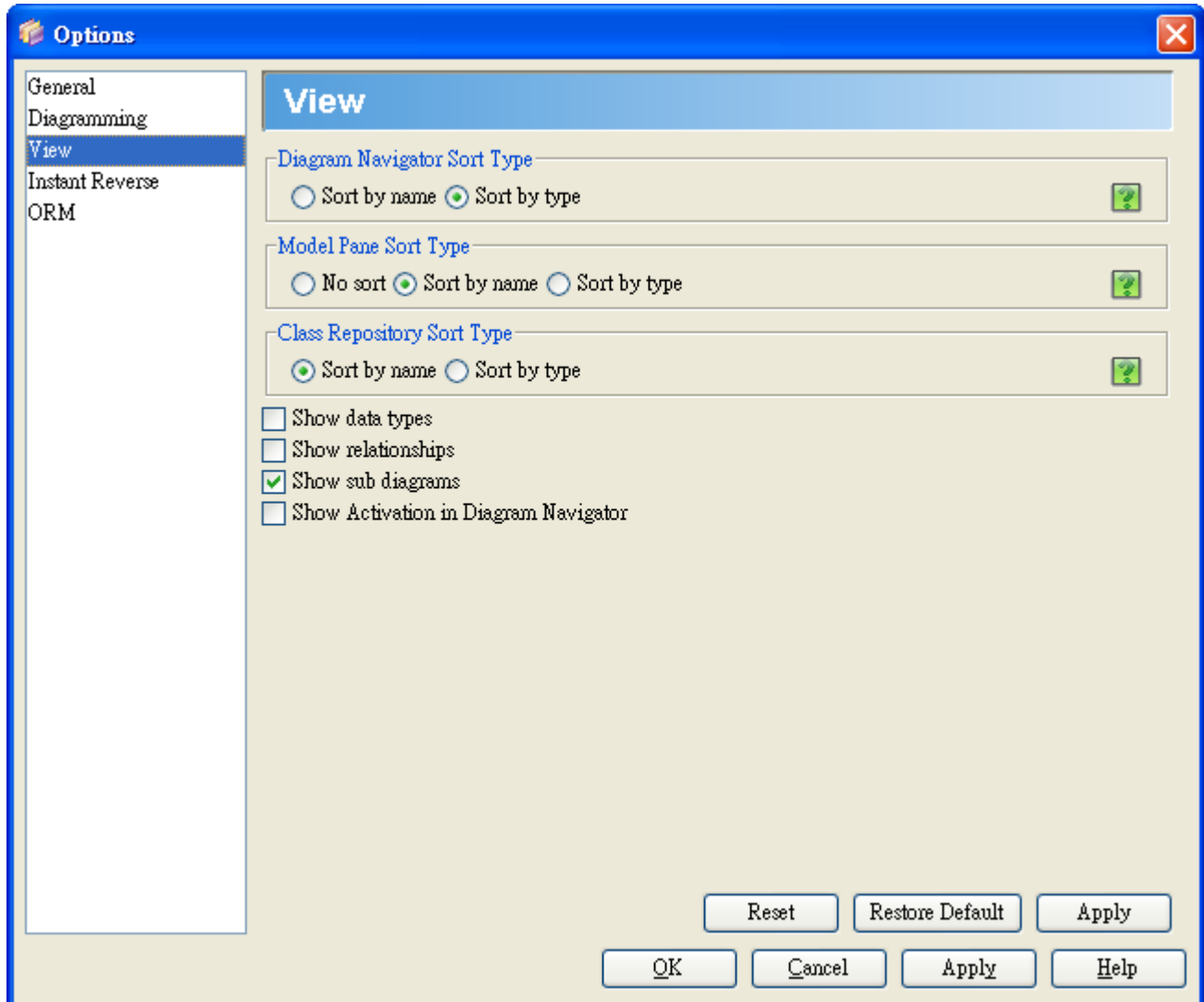


Figure A.3 - Application Option (View)

Option	Description
Diagram Navigator Sort Type	Specifies the sort type to use for the <b>Diagram Navigator</b> . It can either be <b>Sort by name</b> (sort by the element name, which is the default option) or <b>Sort by type</b> (sort by the element type).
Model Pane Sort Type	Specifies the sort type to use for the <b>Model Pane</b> . It can either be <b>No sort</b> , <b>Sort by name</b> (sort by the element name, which is the default option) or <b>Sort by type</b> (sort by the element type).
Class Repository sort type	Specifies the sort type to use for the <b>Class Repository</b> . It can either be <b>Sort by name</b> (sort by the element name, which is the default option) or <b>Sort by type</b> (sort by the type).
Show data types	Check/Uncheck to enable/disable the display of data types in the <b>Model Pane</b> .
Show relationships	Check/Uncheck to enable/disable the display of relationships in the <b>Model Pane</b> .
Show sub diagrams	Select to show sub diagrams of diagram elements in <b>Diagram Navigator</b> .
Show Activation in Diagram Navigator	Select to show activations (sequence diagram) in <b>Diagram Navigator</b> .

Table A.3

## Instant Reverse

The **Instant Reverse** page of the Application Options dialog box contains options related to instant reverse for a specific language.

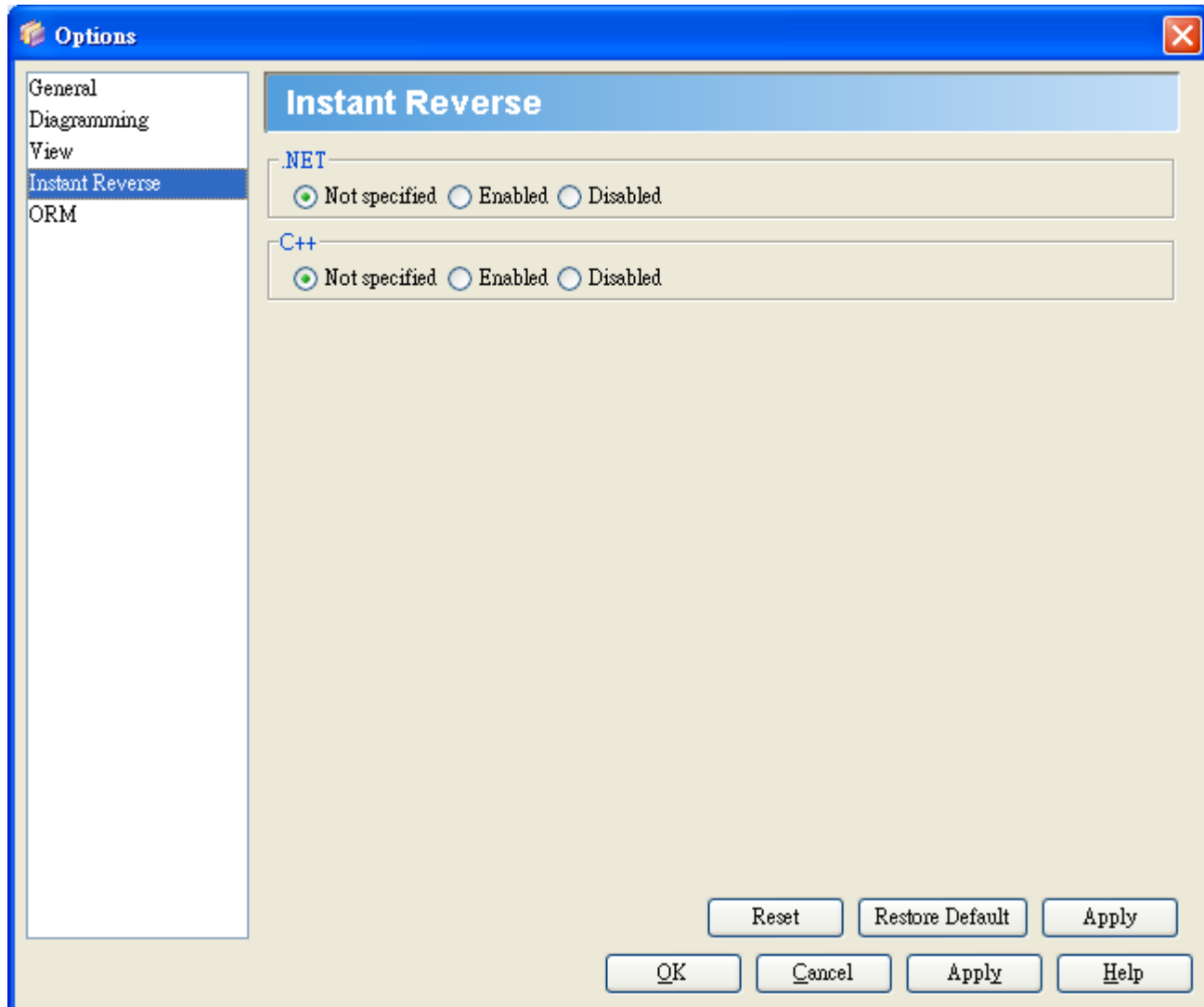


Figure A.4 - Application Option (Instant Reverse)

Option	Description
.NET	Select the availability of Instant Reverse on .NET. It can either be <b>Not Specified</b> , <b>Enabled</b> or <b>Disabled</b> .
C++	Select the availability of Instant Reverse on C++. It can either be <b>Not Specified</b> , <b>Enabled</b> or <b>Disabled</b> .

Table A.4

## ORM

The **ORM** page of the Application Options dialog box contains options related to ORM code generation.

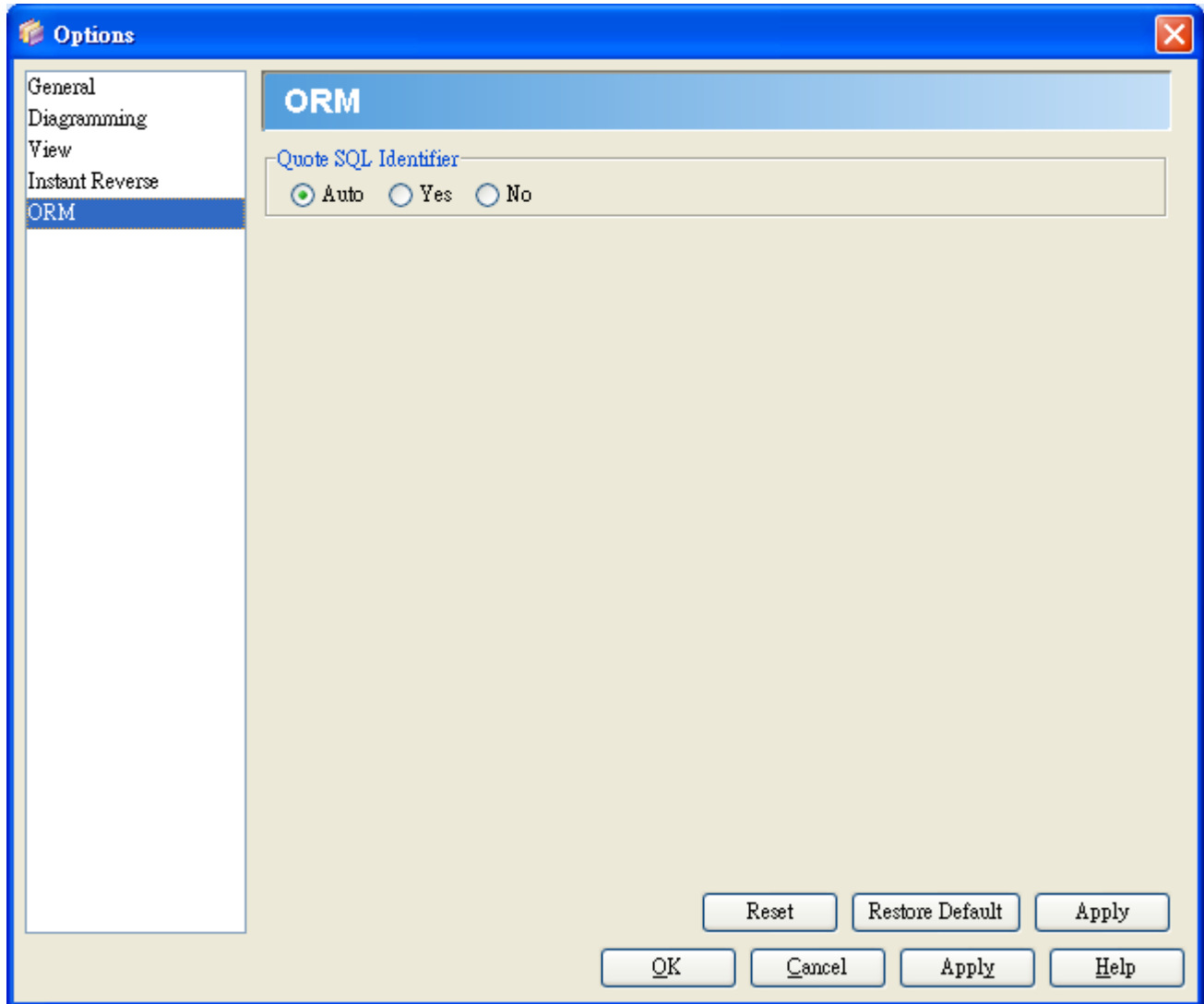


Figure A.5 - Application Option (ORM)

Option	Description
Quote SQL Identifier	Allows you to specify the usage of quoted name on reserved word. By using Quote SQL Identifier, the reserved word will be quoted when generating the data definition language and used as an ordinary word.

Table A.5

