

# 3

## Drawing Data Flow Diagram

In this chapter, you will first learn the basic skills to draw data flow diagrams in BP-VA. Then you will move on to a more advanced level to get the most of BP-VA to streamline and accelerate your business modeling routine.

In this chapter:

- ◆ Creating Business Process Diagram
- ◆ Data Flow Diagram Element
- ◆ Decomposing a Process

# Chapter 3 - Drawing Data Flow Diagram

## Creating Data Flow Diagram

To create a Data Flow Diagram, perform one of the following actions:

- Select menu **File > New Diagram > Others > Data Flow Diagram**

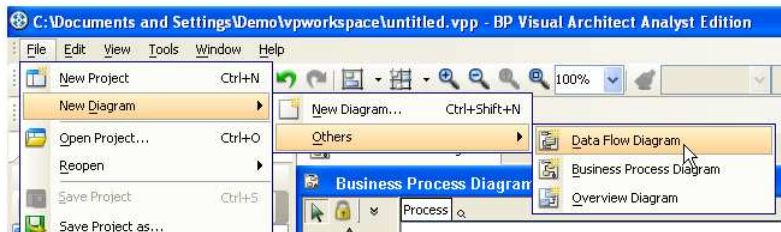


Figure 3.1 - Creating Data Flow Diagram from menu

- Click on the **New Data Flow Diagram** button on the toolbar.



Figure 3.2 - Creating Data Flow Diagram from toolbar

- In the **Diagram Navigator**, right-click **Data Flow Diagram** and select **Create Data Flow Diagram** from the context menu.

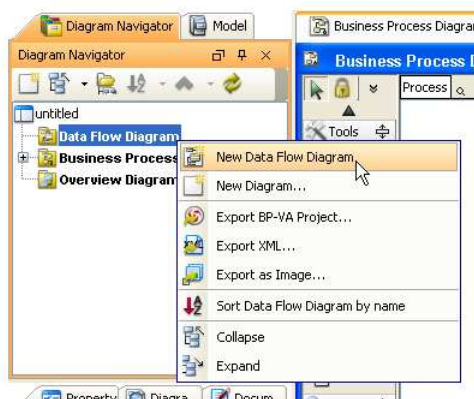


Figure 3.3 - Creating Data Flow Diagram in Diagram Navigator

A blank Data Flow Diagram will be created and opened in the Diagram Pane.

## Data Flow Diagram Elements

This section describes the elements in Data Flow Diagram of BP-VA.

### Note



For basic diagramming techniques, please refer to Chapter 2 - Drawing Business Process Diagram.

## Process

A Process manipulates the input data.



Figure 3.4 - Process

To create a Process, click on the **Process** button on the toolbar and then click on the diagram.

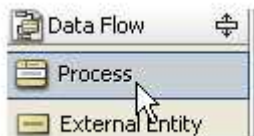


Figure 3.5 - Creating a Process

The Process symbol comprises of:

**ID** - The unique identifier, located at top-left of the symbol

**Location** - Where/by whom the process is done, located at top-right of the symbol

**Name** - The name of the Process, located at the center of the symbol

To edit these properties, open the specification dialog box of the Process. The name of the Process can also be edited in-place in the diagram.

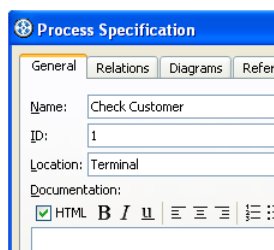


Figure 3.6 - Process Specification

## External Entity

An External Entity provides data/information to the system, or receive data/information from it.

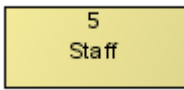


Figure 3.7 - External Entity

To create an External Entity, click on the **External Entity** button on the toolbar and then click on the diagram.

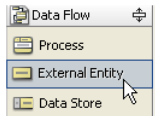


Figure 3.8 - Creating an External Entity

The External Entity symbol comprises of:

**ID** - The unique identifier, located at the top of the symbol

**Name** - The name of the External Entity, located at the center of the symbol

To edit these properties, open the specification dialog box of the External Entity. The name of the External Entity can also be edited in-place in the diagram.

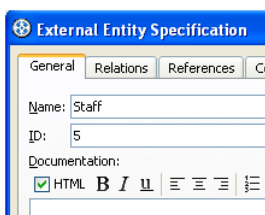


Figure 3.9 - External Entity Specification

## Data Store

A Data Store is the location where data is held temporarily or permanently.

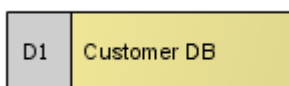


Figure 3.10 - Data Store

To create a Data Store, click on the **Data Store** button on the toolbar and then click on the diagram.

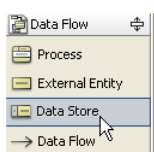


Figure 3.11 - Creating a Data Store

The Data Store symbol comprises of:

- Type + ID** - The type and the unique identifier of the Data Store, both located at the left of the symbol
- Name** - The name of the Data Store, located at the center of the symbol

To edit these properties, open the specification dialog box of the Data Store. The name of the Data Store can also be edited in-place in the diagram.

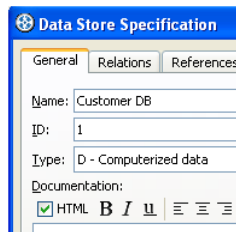


Figure 3.12 - Data Store Specification

## Data Flow

A Data Flow represents the data/information that flows to/from a Process.

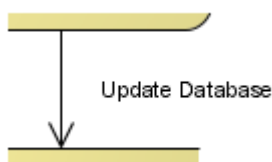


Figure 3.13 - Data Flow

To create a Data Flow, click on the **Data Flow** button on the toolbar, and then drag from the source shape to the destination shape.

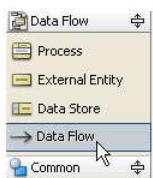


Figure 3.14 - Creating a Data Flow

## Decomposing a Process

To decompose a Process, right-click on it and select **Decompose** from the context menu.

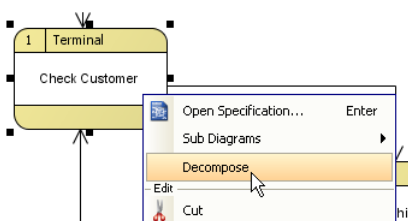


Figure 3.15 - Decomposing a Process

If the Process connects with Data Stores and External Entities, you will be asked whether to add those shapes to the decomposed diagram.

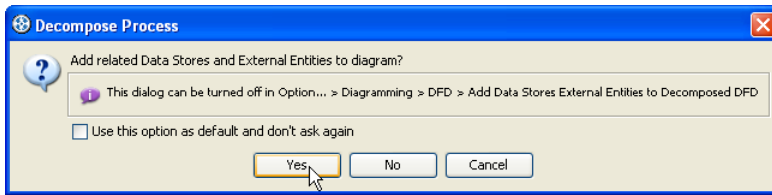


Figure 3.16 - Prompt for adding related shapes to decomposed diagram

If you selected Yes, the related shapes will be added to the decomposed diagram. Otherwise the diagram will be blank.

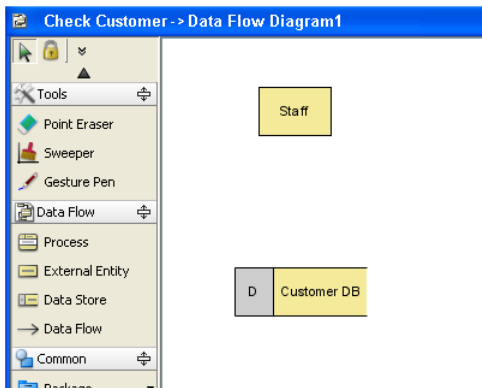


Figure 3.17 - Data Flow Diagram of a decomposed Process