

# 2

## **Installing Business Process Visual ARCHITECT with No-Install**

# Chapter 2 - Installing Business Process Visual ARCHITECT with No-Install

While most of the applications nowadays require an installation, the No-Install approach is considered to be a lightweight alternative. This chapter will give you an introduction to what the No-Install version is, and show you how to get BP-VA started from downloading to running the application. Here are the covered topics:

- Introduction to the No-Install version
- Downloading Business Process Visual ARCHITECT from the Internet
- Installing Business Process Visual ARCHITECT
- Start the application
- Importing a valid license key

## Introduction to the No-Install version

No-Install, as suggested by its name, is a compressed file that contains BP-VA in a ready-to-run form. You can run BP-VA as soon as the file is decompressed. A characteristic that makes a No-Install different from the installer is that, it will not register itself to the system, nor to create any shortcuts. This make the installation more flexible as you can move the installation to somewhere else simply by moving the whole installation folder without the concern of breaking any linkage to the system.

## Downloading BP-VA

To download BP-VA:

1. Visit Visual Paradigm's official download site at:  
<http://www.visual-paradigm.com/download/>
2. Click on the image for Business Process Visual ARCHITECT.

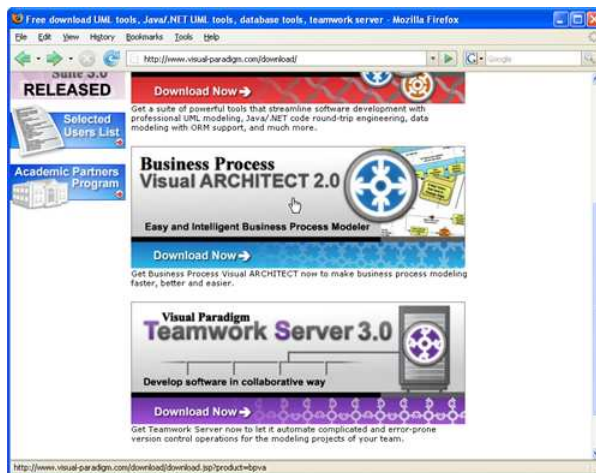


Figure 1 - Click to visit the download page of Business Process Visual ARCHITECT

3. Enter your account information, and click **Continue** to proceed.

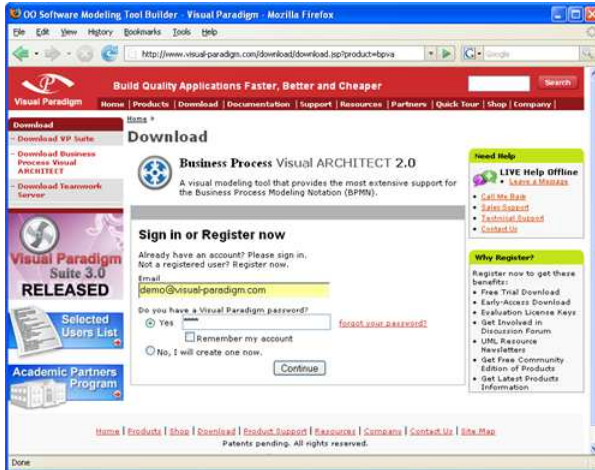


Figure 2 - Login to proceed to download

4. Choose the way of receiving the evaluation key, or not to receive it. Here are the description of each of the possible ways:

Ways of receiving an evaluation key	Description
Download Product Only (without request evaluation key)	Just to download BP-VA without the need of an evaluation key.
Send evaluation key as attachment	You will receive an email attached with the key file. Make sure your server allows email with attachments for choosing this option. If this option is unchecked, you will receive an email, which includes a download link of the key file.

5. Select your operating system from the **Platform** drop-down menu. Choose the item with a bracket (*No-Install*) added to the name of the platform.
6. From the **Mirror Site** drop-down menu, choose the location that is closest to your current location for a faster download speed.
7. Click **Download** to proceed with downloading BP-VA.

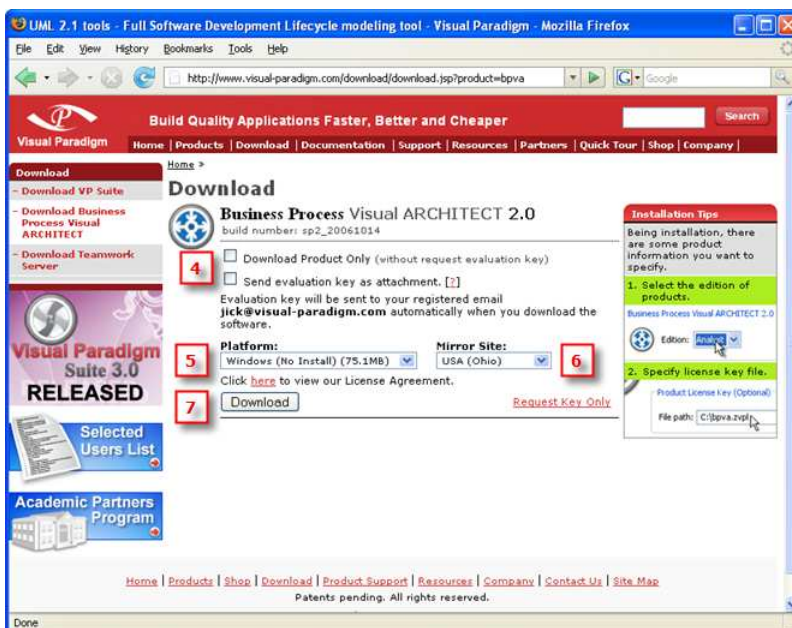


Figure 3 - Business Process Visual ARCHITECT download page

## Installing BP-VA

To install BP-VA:

1. Decompress the No-Install file.

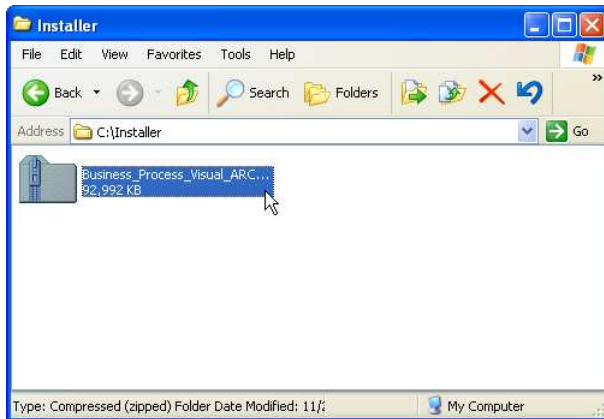


Figure 4 - The No-Install file (zipped)

### Note



For Linux platforms, run the following command to decompress the No-Install file:  
`tar -zxf %NO-INSTALL-FILE.tar.gz% -C %DESTINATION-FOLDER%`

2. Execute `%NO-INSTALL-DECOMPRESSED_FOLDER%/bin/BPVA Product Edition Manager.exe`.

### Note



For Linux and Mac OS X platforms, execute the file **BPVA Product Edition Manager** inside `%NO-INSTALL-DECOMPRESSED-FOLDER%/bin/`

3. Select the product edition from the **Edition** drop down menu. Click **Next** to confirm the setting.

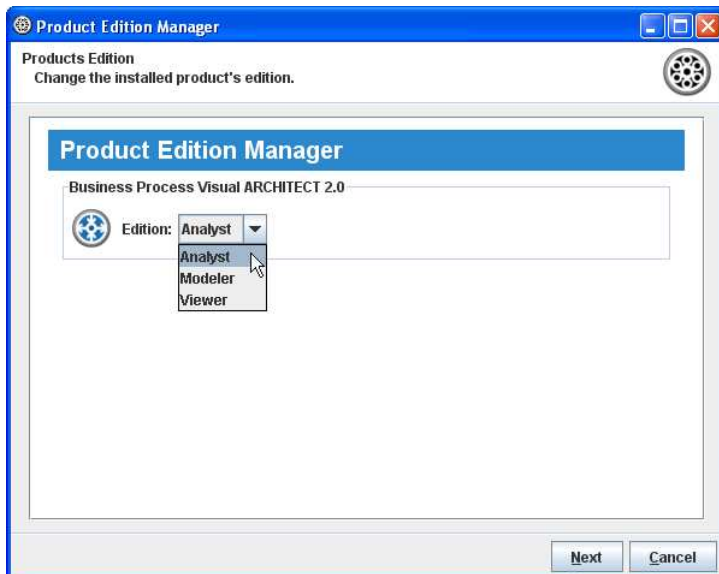


Figure 5 - Selecting the product edition

4. Click **Finish** to close the **Product Edition Manager**.

## Starting BP-VA

1. Start BP-VA by executing **Business Process Visual ARCHITECT 2.0.exe** inside `%NO-INSTALL-DECOMPRESSED-FOLDER%/bin`.

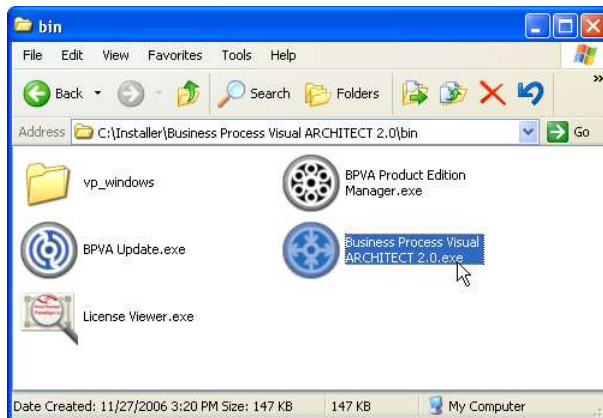


Figure 6 - Attempting to start BP-VA

### Note



For Linux and Mac OS X platforms, execute the file 'Business Process Visual ARCHITECT 2.0' inside `%NO-INSTALL-DECOMPRESSED-FOLDER%/bin`

2. The **Workspace Launcher** appears. A workspace is a repository of the UML projects. Besides storing projects, it stores also the settings, user interface perspectives and other preferences defined for the working environment. Specify the workspace folder.

If you do not want this dialog box to appear again, check **Use this as the default and do not ask again**. This will cause BP-VA to open the specified workspace folder automatically the next time.

If you already have an existing workspace, you can import the settings from there by clicking **Import Workspace...**

Click **OK** to continue.

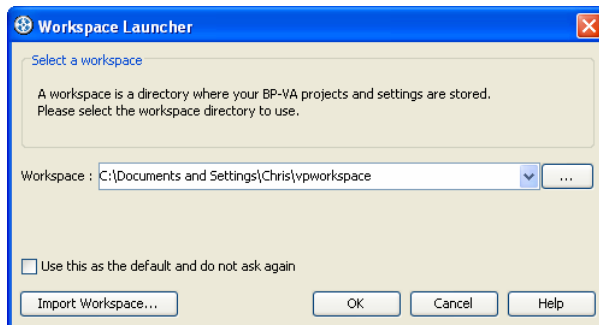
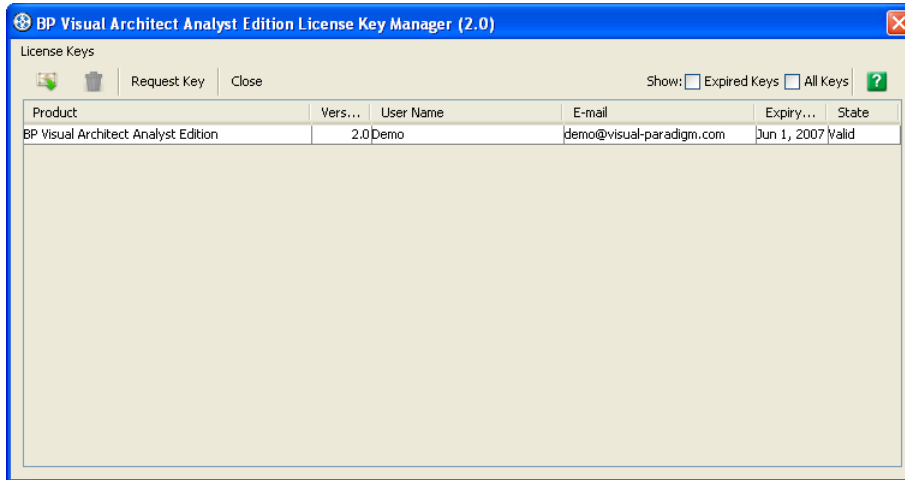


Figure 7 - Workspace Launcher

3. If you have imported a valid license key before, BP-VA should be started now. If not, the **License Key Manager** appears. The License Key manager is a utility for importing a license key. To import a key:
  1. Select **License Keys > Import...** from the menu.
  2. Specify the file path of the key file.
  3. Press **Import** to import the key file.

Click **Close** to close the **License Key Manager** and start BP-VA. If it prompts you with an invalid license key message, make sure the key you imported does match with the tool that you are running in terms of the following aspects:

- Product (e.g. Business Process Visual ARCHITECT)
- Version (e.g. Version 2.0)
- Edition (e.g. Analyst Edition)



*Figure 8 - The License Key Manager*